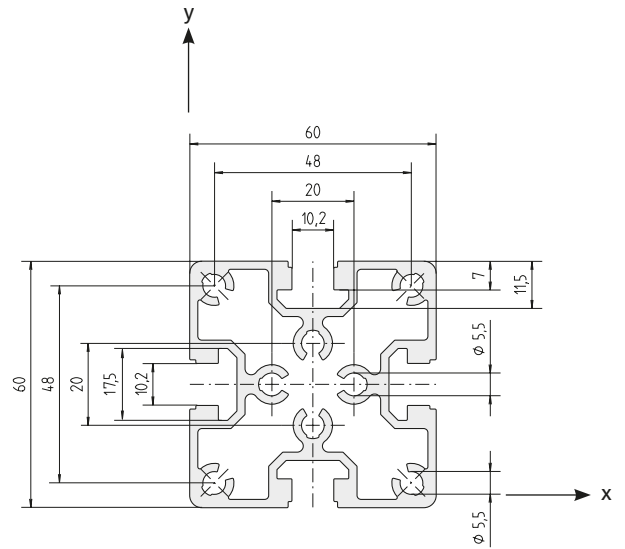




F-60x60-L



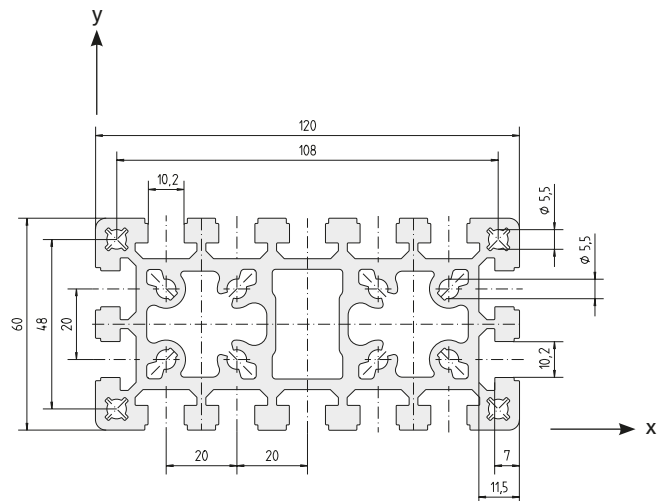
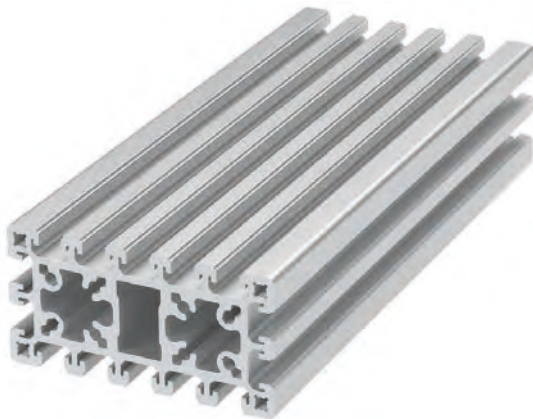
Area	1095	mm ²
I _x	42.2	cm ⁴
I _y	42.2	cm ⁴
I _t	18.0	cm ⁴
W _x	14.1	cm ³
W _y	14.1	cm ³
Weight	2960	g/m

Code No. F-60x60-L profile			Anodised
4225000	Cut to size	max. 6000 mm	Clear
4225001	Bar	6000 mm	Clear

Connection	Connection to slot geometry	lot sizes	Code No.
long. + transverse	30	10, 20, 30... pcs	4226706
	40	10, 20, 30... pcs	4226702

For description of slot geometry, please see page 26

F-60x120



Area	2777	mm ²
I _x	101.3	cm ⁴
I _y	392.8	cm ⁴
I _t	57.9	cm ⁴
W _x	33.8	cm ³
W _y	65,5	cm ³
Weight	7895	g/m

Code No. Profile F-60x120			Anodised
4065000	Cut to size	max. 6000 mm	Clear
4065001	Bar	6000 mm	Clear

Connection	Connection to slot geometry	lot sizes	Code No.
long.	30	-	4326706
	40	-	4326702
transverse	30	10, 20, 30... pcs	4226706
	40	10, 20, 30... pcs	4226702

For description of slot geometry, please see page 26