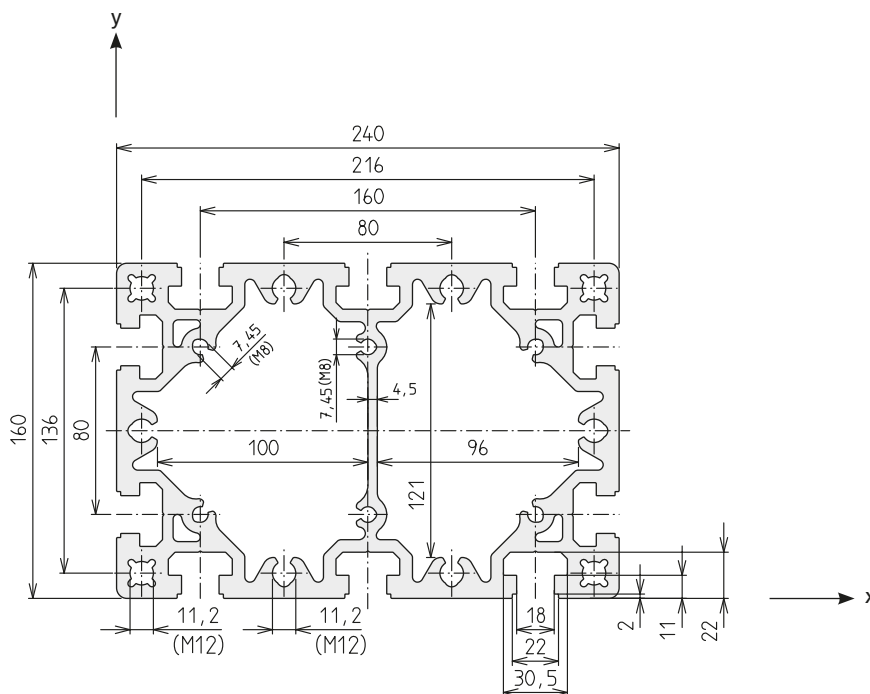
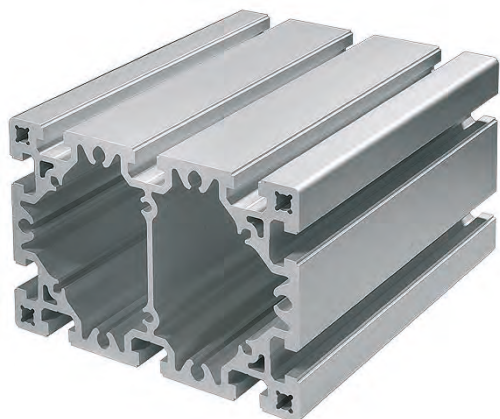


Heavy duty profiles

# Heavy duty profiles / size 160

D-160x240



Code No. Profile D-160x240			Anodised
4C65000	Cut to size	max. 6000 mm	Clear
4C65001	Bar	6000 mm	Clear

Area	10986	mm <sup>2</sup>
I <sub>x</sub>	3601.5	cm <sup>4</sup>
I <sub>y</sub>	7333.4	cm <sup>4</sup>
I <sub>t</sub>	2980.8	cm <sup>4</sup>
W <sub>x</sub>	450.2	cm <sup>3</sup>
W <sub>y</sub>	611.1	cm <sup>3</sup>
Weight	29647	g/m

Connection	Quantity required per conn.	Slot geometry	Press mount connector	Code No. /unit
 long.	2	D	-N- 240	4C56700
 transverse	3		-N- 160	4C16700