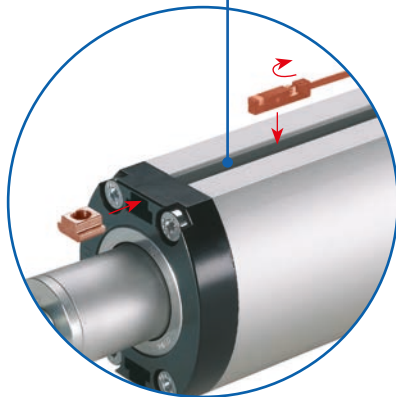
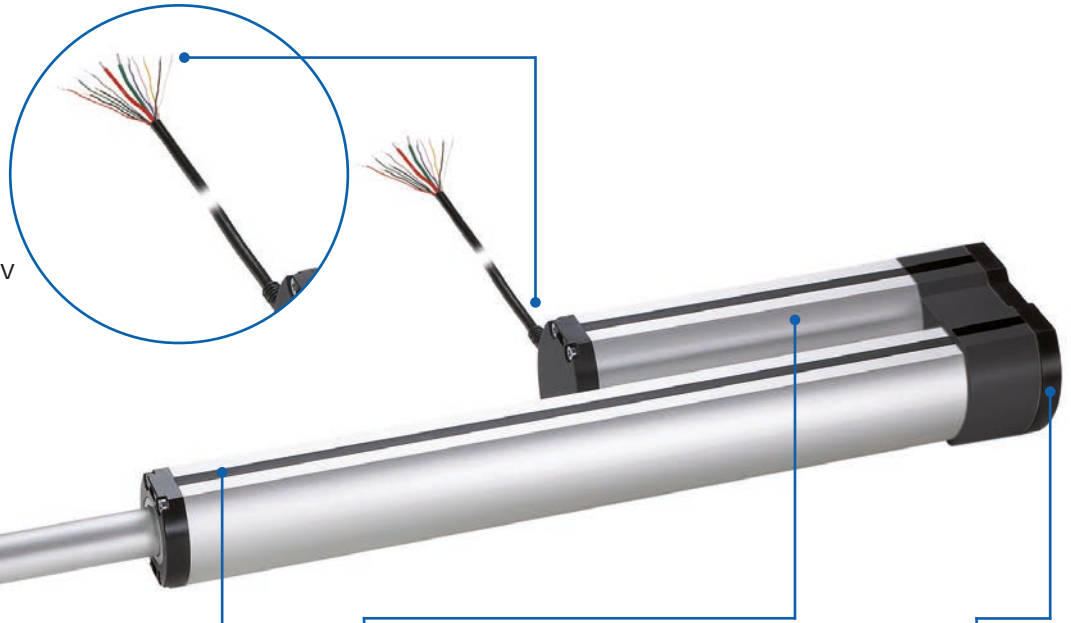


Heavy duty cylinder – LZ 80

The industrial design complete system with push/pull forces up to 10,000 N.

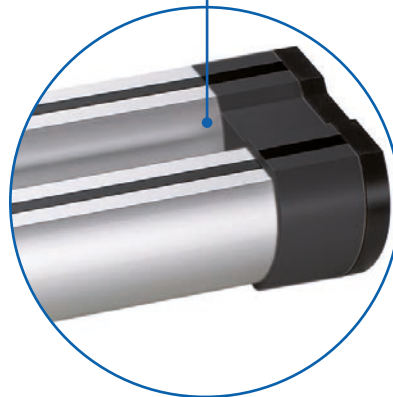
Electrical connection

- ✓ Cable outlet
- ✓ Internal limit switches, incremental displacement pick-up and optional lead-through for brake
- ✓ Connection to PLC or equivalent control 24 V / 36V



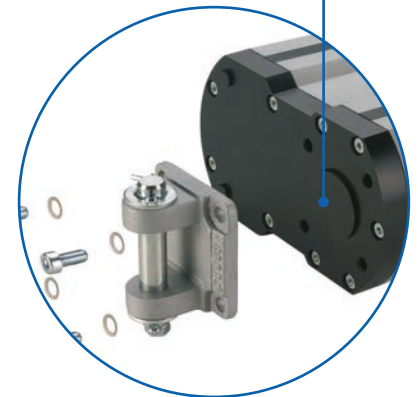
Adjustable external magnetic switch

- ✓ Covered in slot geometry
- ✓ Stroke can be adjusted
- ✓ Accessories can be retrofitted
- ✓ Pre-fitted with internal magnets for external magnetic switch



High-performance DC motor

- ✓ Self-locking to 10,000 N



Cylinder fixing

- ✓ Simple connection of trunnion flange, trunnion or clevis

Features:

- Integrated DC drive
- Integrated limit switches
- Flexible use of space thanks to parallel motor positioning
- Coverable slot geometry on both sides, supports a range of fixing options
- Push rod with rotation locking

- Maintenance-free for entire lifetime of unit
- IP 54
- Self-locking
- ACME screw

Options:

- Optional IP 65 can be supplied
- Special stroke lengths available on request
- ACME screw version optionally available with motor brake



LZ 80 Electric cylinder – Table of contents

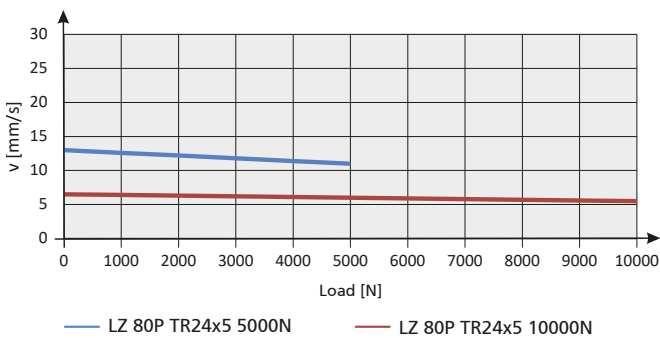
<p>Properties/Technical data</p>	<ul style="list-style-type: none"> ■ General information/operating conditions ... 284
<p>Versions (Dimensions, order numbers)</p>	<p>LZ 80 electric cylinder with ACME screw:</p> <ul style="list-style-type: none"> ■ Dimensions/Order table 285
<p>Accessories</p>	<p>Fixing</p> <ul style="list-style-type: none"> ■ Slot stones 286 ■ Clevis 286 ■ Bearing block for Clevis 286 ■ Swivel head 286 ■ Fork attachment for Swivel head 287 ■ Swivel 287 ■ Bearing block for Swivel 287 ■ Trunnion mounting set 288 ■ Support blocks for trunnion mounting 288 <p>Position determination</p> <ul style="list-style-type: none"> ■ Magnetic switch 289 ■ Controls 289

LZ 80 – Technical data

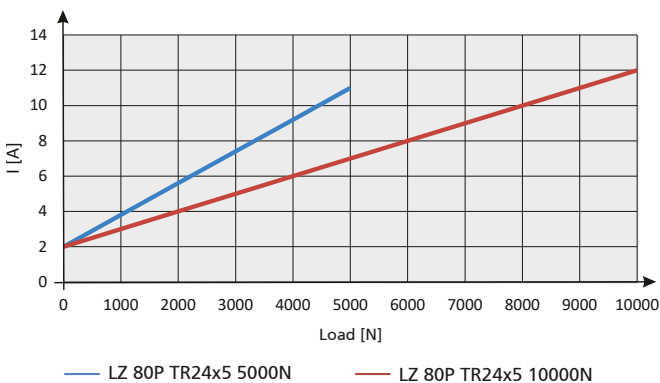
General information/operating conditions

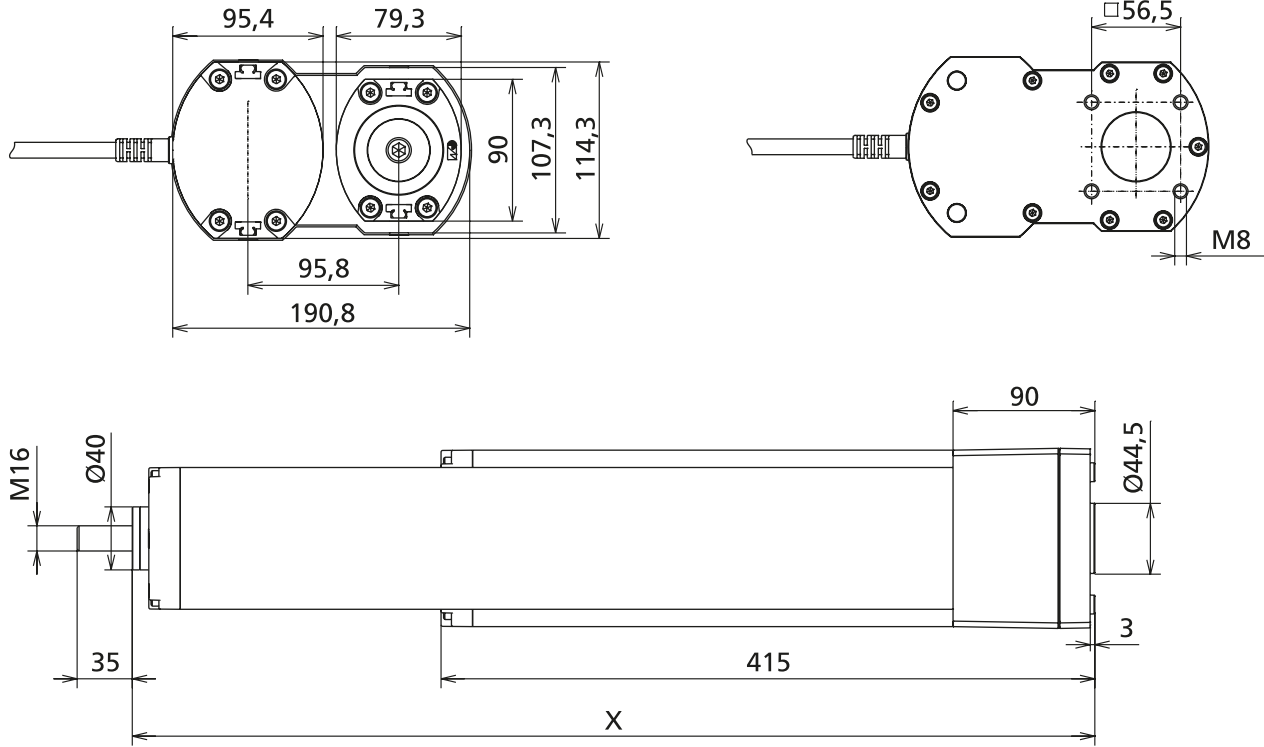
Type	ACME screw	
Design	Linear cylinder with integrated DC motor	
Guide	Double bearing with POM bushes	
Installation position	Any position, without shear forces	
Ambient temperature	+5°C to +40°C	
Repeatability	0.5 mm	
Speed	Max. 25 mm/s	
Duty cycle (at max. load)	10% (1 min. operating time; 9 mins rest time/depending on sizing, up to 100% duty cycle possible)	
Voltage	24 V	
Current consumption	12 A	
Power input	288 W	
Protection class	IP 54 (optional IP 65)	
Compressive force/tensile force	10,000 N	
Self-locking	10,000 N	10,000 N (motor brake)

Speed/Force diagram



Current consumption/Force diagram





Versions LZ 80

Code No.	Type	Max. force F [N]	Max. speed [mm/s]
ACME screw 24 x 5			
QLP00ABAB_ _ _ _	LZ 80	5,000	13
QLP00ACAB	LZ 80	10,000	6.5

Stroke lengths available in increments of 7.5 mm
 e.g. stroke [mm] = 0.3 9 7.5

Stroke* [mm]	Installation dimension X [mm]	Weight [kg]
105	416	12.5
150	461	13
202	513	13.5
255	566	14
300	611	14.5
352	663	15
405	753.5	16
450	798.5	16,5
502	850.5	17
555	903.5	17.5
600	948.5	18
652	1038	18.6
705	1091	19
750	1136	19.3
802	1233	20
855	1286	20.5
900	1331	21
952	1383	21.5
1005	1436	22

*Tolerance +0.5mm/-2.5mm

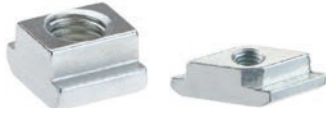
LZ 80 – Fixing/Position determination

Order instruction square nut:

- Purchase only in lot sizes and a multiple of that, see product table below

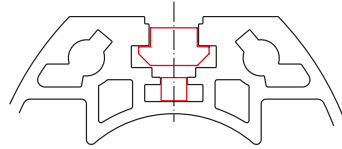
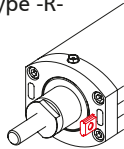
- Slot stones facilitate the attachment of fittings to the cylinder.
- To this end, the slot stones can be slid into the lateral slots (Type -N-) or swivelled into the slot from above (Type -R-).

Slot stone



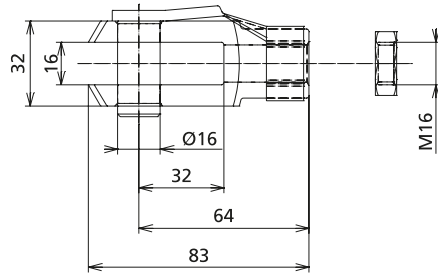
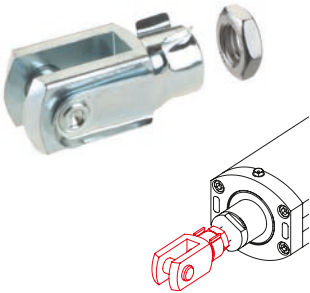
Type -N-

Type -R-



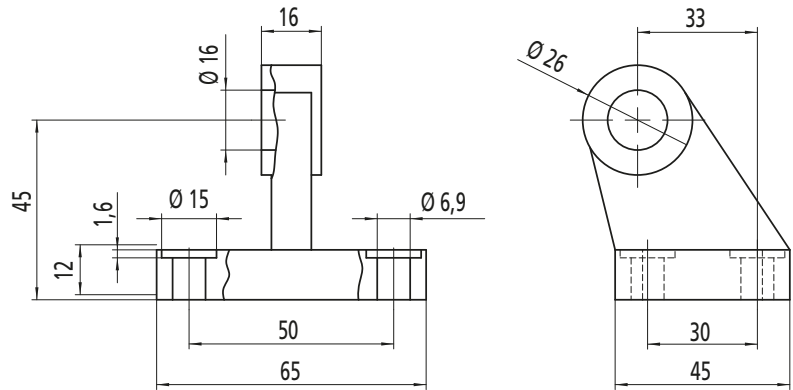
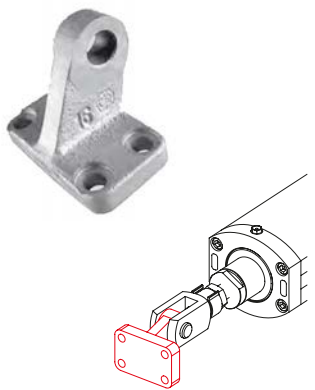
Code No.	Type	lot sizes	F [N]
4026203	Slot stone -N- M6	10, 20, 30... pcs	9,000
4026206	Slot stone -N- M8	10, 20, 30... pcs	9,000
4026221	Slot stone -R- M6	10, 20, 30... pcs	8,000
4026222	Slot stone -R- M8	10, 20, 30... pcs	8,000

Clevis



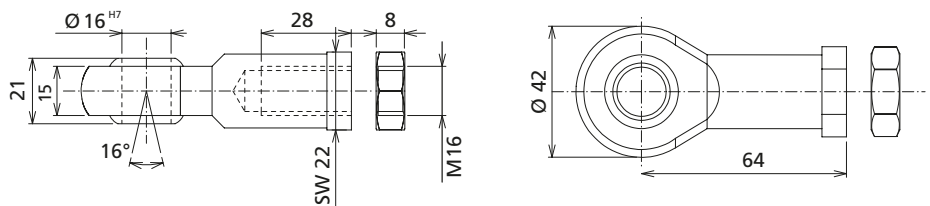
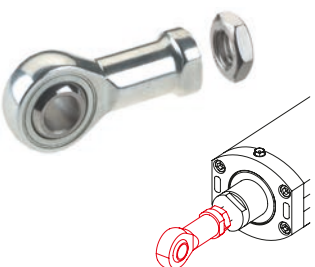
Code No.	Type
QZD050571	Clevis M16

Bearing block for Clevis



Code No.	Type	
QZD050573	LZ 80	Bearing block Ø16

Swivel head

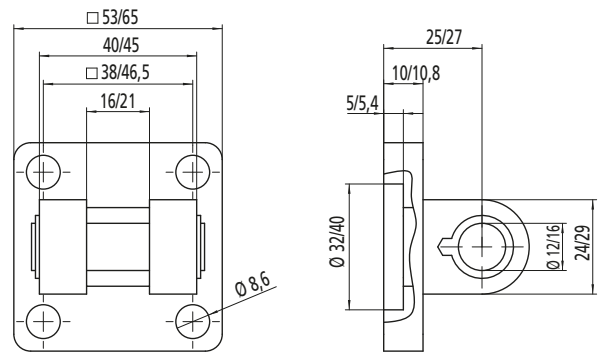
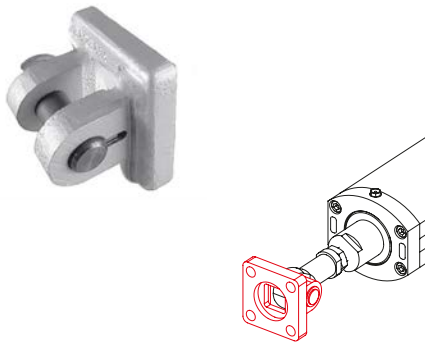


Code No.	Type	
QZD050575	LZ 80	Swivel head M16



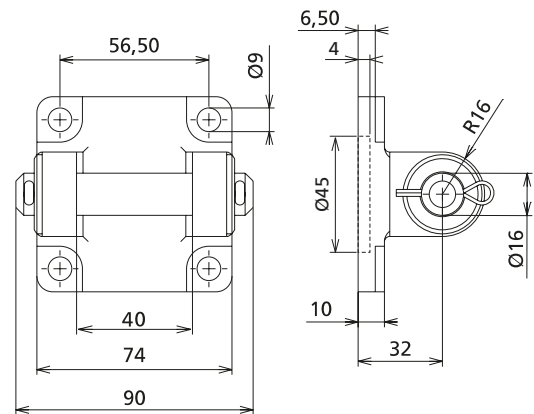
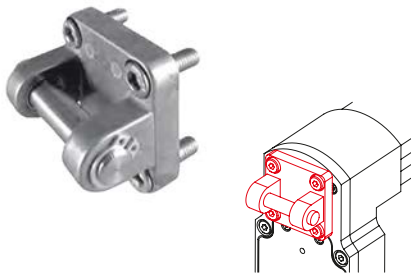
LZ 80 – Fixing/Position determination

Fork attachment for Swivel head



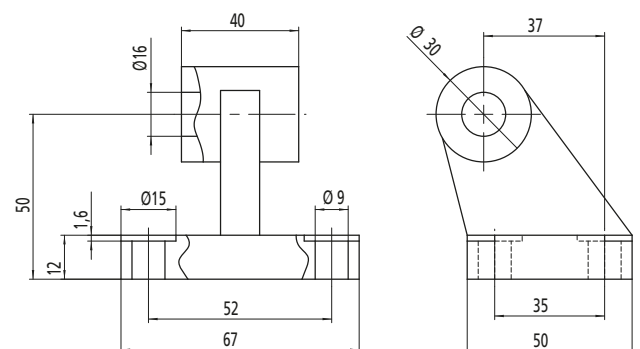
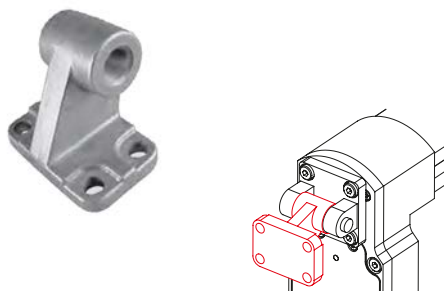
Code No.	Type
QZD050577	LZ 80 Fork attachment Ø 16

Swivel



Code No.	Type
QZD050580	Swivel Ø 16

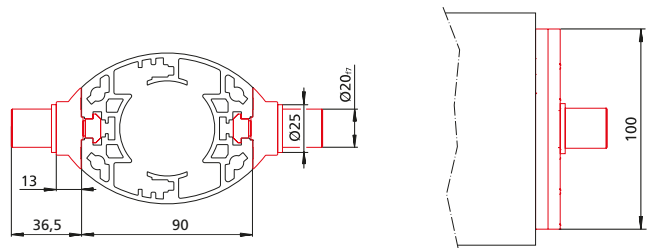
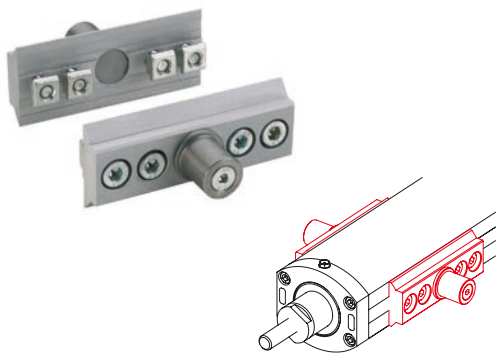
Bearing block for Swivel



Code No.	Type
QZD050585	LZ 80 Swivel head wide Ø 16

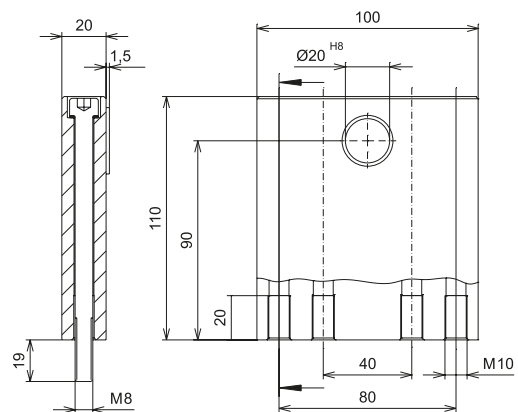
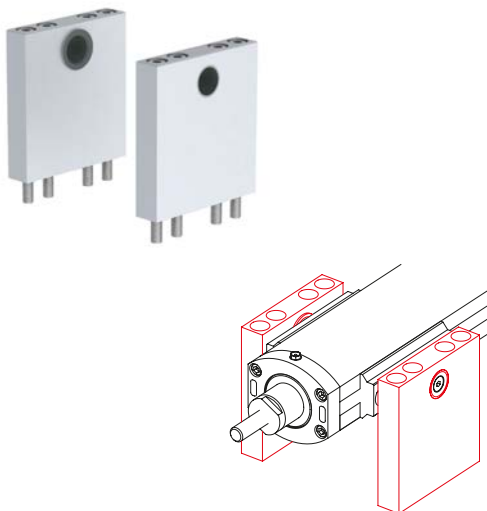
LZ 80 – Fixing/Position determination

Trunnion mounting set



Code No.	Type
QZD050588	Trunnion mounting set LZ 80

Support blocks for trunnion mounting

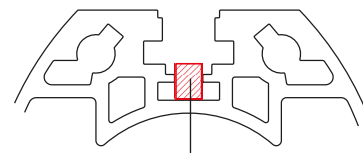
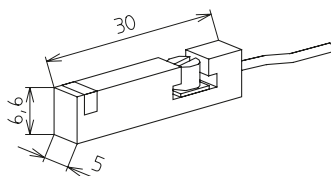


Code No.	Type
QZD050589	Support blocks LZ 70/80

Magnetic switch

- Signals from the magnetic switch can be collected and evaluated by a customer-provided control unit (such as a PLC).

- The switch can be retrofitted in the lateral slot (protected by a cover profile as standard)
- Magnets are integrated in the cylinder as standard.



Magnetic switch

Code No.	Type
QZD050598	Magnetic switch, NO contact, cable length 6 m
QZD050599	Magnetic switch, NC contact, cable length 5.3 m

Magnetic switch – Technical data

	NC contact	NO contact
Voltage	10-30 V DC	5-30 V DC
Current consumption	< 10 mA	< 10 mA
Output current	Max. 100 mA	Max. 50 mA
Output type	PNP	PNP
Function indication	LED	LED
Ambient temperature	-25°C to +85°C	-20°C to +70°C
Protection class	IP 67	IP 68

Control requirements

Power supply	24 V DC, at least 500 W
Current output	At least 20 A
Deceleration	Via generator brakes
Brake power	At least 500 W
Duty cycle	Up to 100%
Motor brake	24 V DC, at max. 1 A
Limit switch evaluation	Upper and lower limit switch (NC contacts)